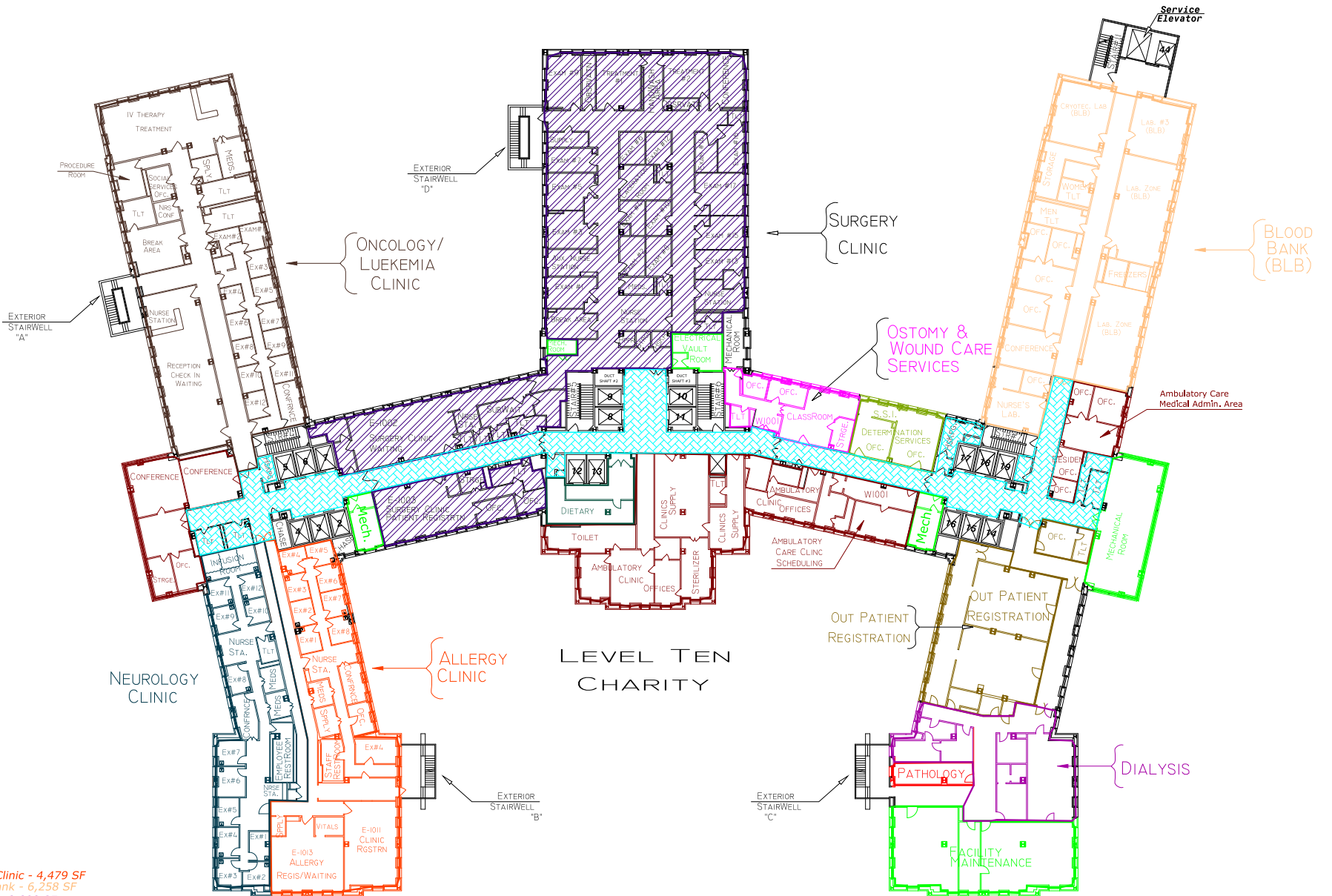


LEVEL ONE CHARITY

- Administration - 2,419 SF
- Admit - 1,831 SF
- CT-Ultrasound - 3,066 SF
- Emergency Room Treatment - 10,332 SF
- Facility Maintenance - 7,828 SF
- Fast Track Treatment - 5,650 SF
- Fast Track Walk In - 5,390 SF
- General Administration - 11,329 SF
- HyperBaric - 2,726 SF
- Medical Emergency Ward - 6,042 SF
- Medical Records - 5,205 SF
- MRI - 2,345 SF
- North East X-Ray - 2,003 SF
- Orthopedic Clinic - 6,796 SF
- Radiology - 1,450 SF
- Rad/Oncology - 3,610 SF
- Receiving - 2,650 SF
- SANE Unit - 856 SF
- W-15 / Family Dr. Clinic - 3,297 SF

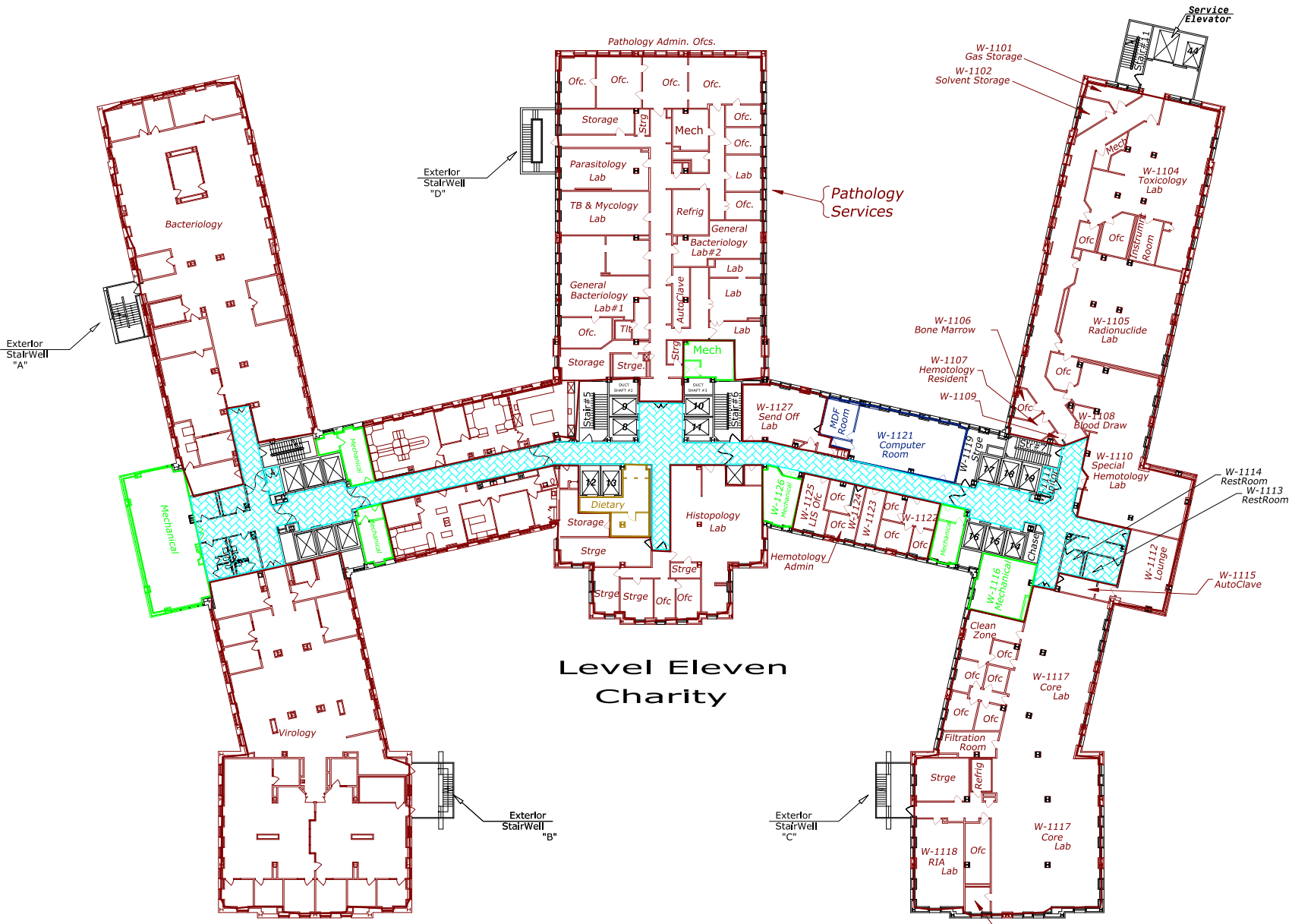
Radiation Oncology  
3,610 SF





- Allergy Clinic - 4,479 SF
- Blood Bank - 6,258 SF
- Dialysis - 2,090 SF
- Dietary - 623 SF
- Facility Maintenance - 3,742 SF
- General Admin. - 4,793 SF
- Nuerology Clinic - 4,479 SF
- Oncology Clinic - 7,126 SF
- Ostomy/Wound Care Clinic - 1,056 SF
- Out Patient Registration - 2,768 SF
- Pathology - 263 SF
- Social Security Determination Ofcs. - 708 SF
- Surgery Clinic - 11,856 SF

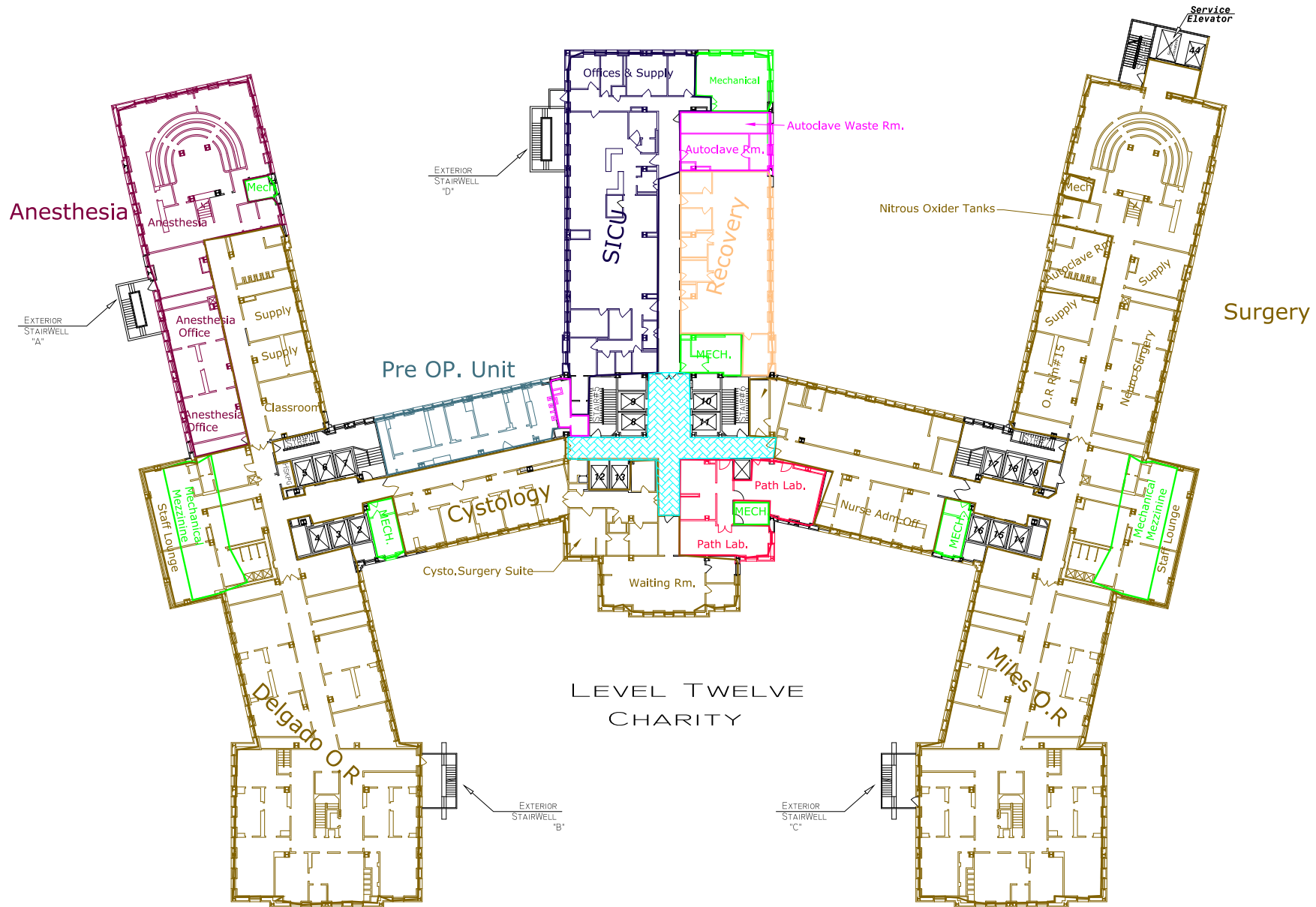




# Level Eleven Charity

Dietary - 391 SF  
 Facility Maintenance - 2,791 SF  
 General Admin. - 2,582 SF  
 Hospital Information Systems - 1,079 SF  
 Pathology - 45,134 SF

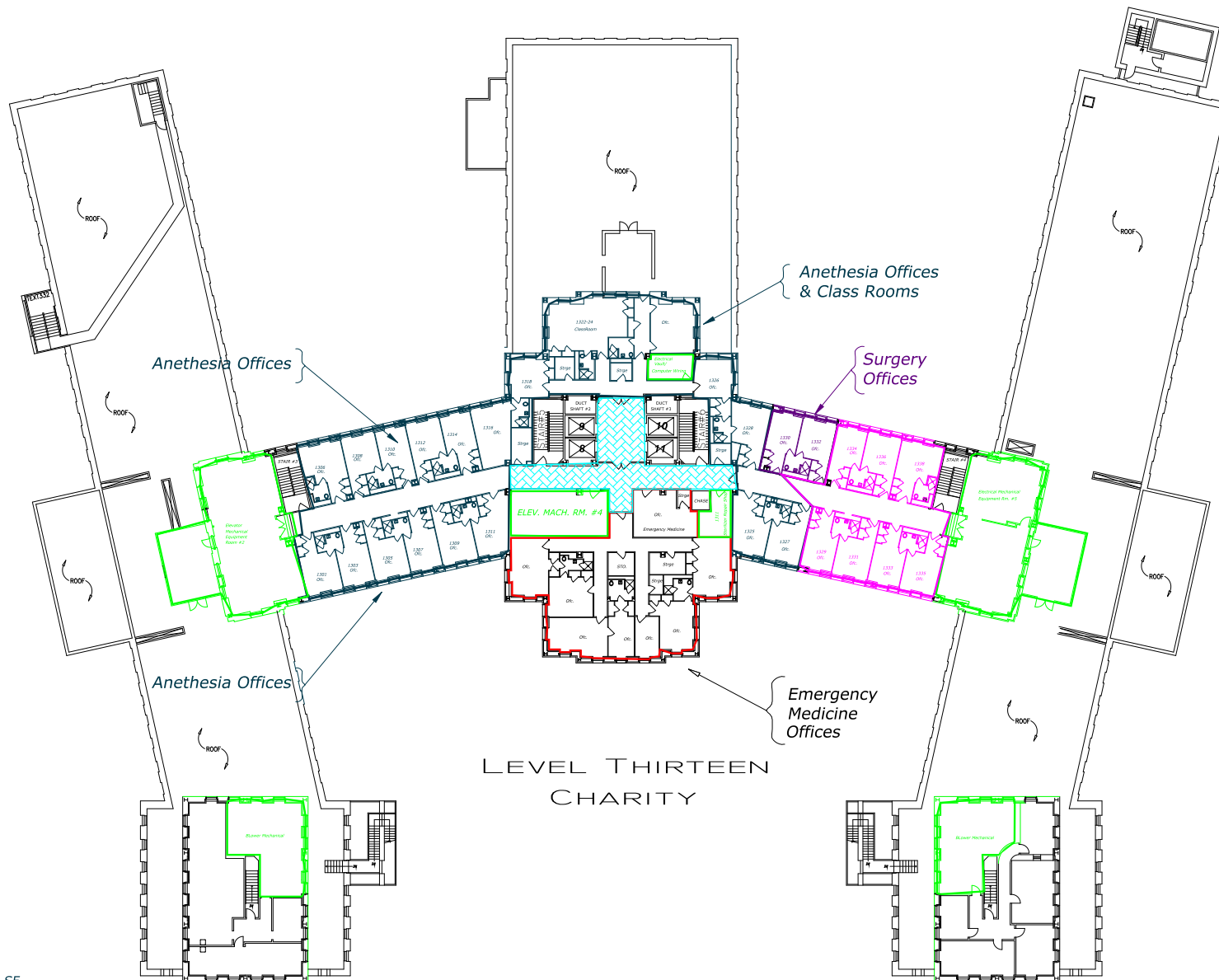




Anesthesia - 4,473 SF  
 Facility Maintenance - 3,520 SF  
 General Admin. - 1,192 SF  
 Pathology - 2,946 SF  
 Pre-Operative Unit - 1,419 SF  
 Recovery - 2,237 SF  
 S.I.C.U. - 4,768 SF  
 Surgery - 37,341 SF  
 Sterilization - 898 SF

LEVEL TWELVE  
CHARITY





LEVEL THIRTEEN  
CHARITY

Anesthesia Ofcs. - 7,038 SF  
 Emergency Medicine Ofcs. - 2,956 SF  
 Facility Maintenance - 5,952 SF  
 General Admin. - 1,061 SF  
 On-Call Rooms - 2,256 SF  
 Surgery Ofcs. - 492 SF

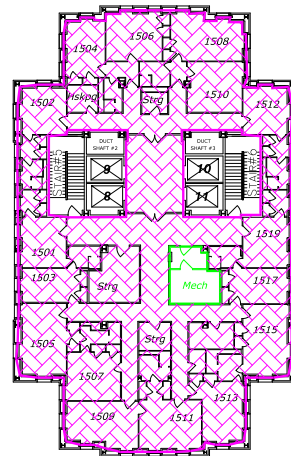




LEVEL FOURTEEN  
CHARITY

Facility Maintenance - 2,044 SF  
ON-Call Rooms - 15,784 SF



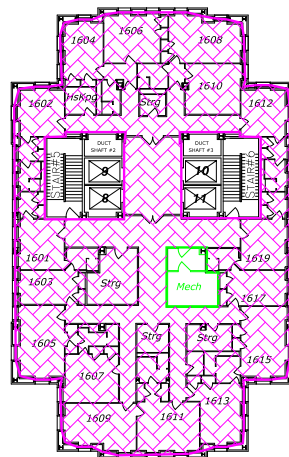


LEVEL FIFTEEN  
CHARITY

ON\_Call Rooms

*Facility Maintenance* - 224 SF  
*ON\_Call Rooms* - 7,430 SF





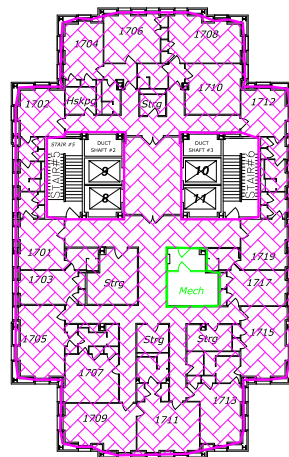
LEVEL SIXTEEN  
CHARITY

*ON-Call Rooms*

Facility Maintenance - 224 SF  
ON-Call Rooms - 7,430 SF







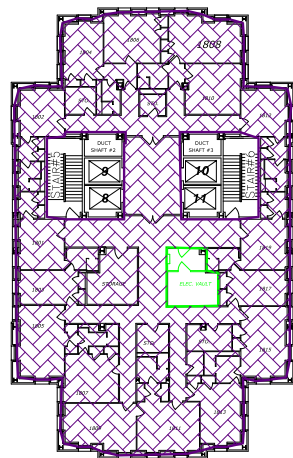
LEVEL SEVENTEEN  
CHARITY

*ON-Call Rooms*

Facility Maintenance - 224 SF

ON-Call Rooms - 7,430 SF



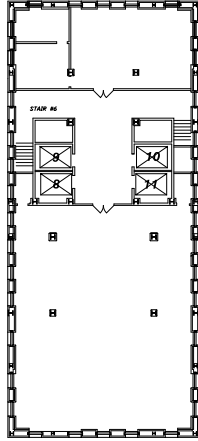


LEVEL EIGHTEEN  
CHARITY

Facility Maintenance - 224 SF

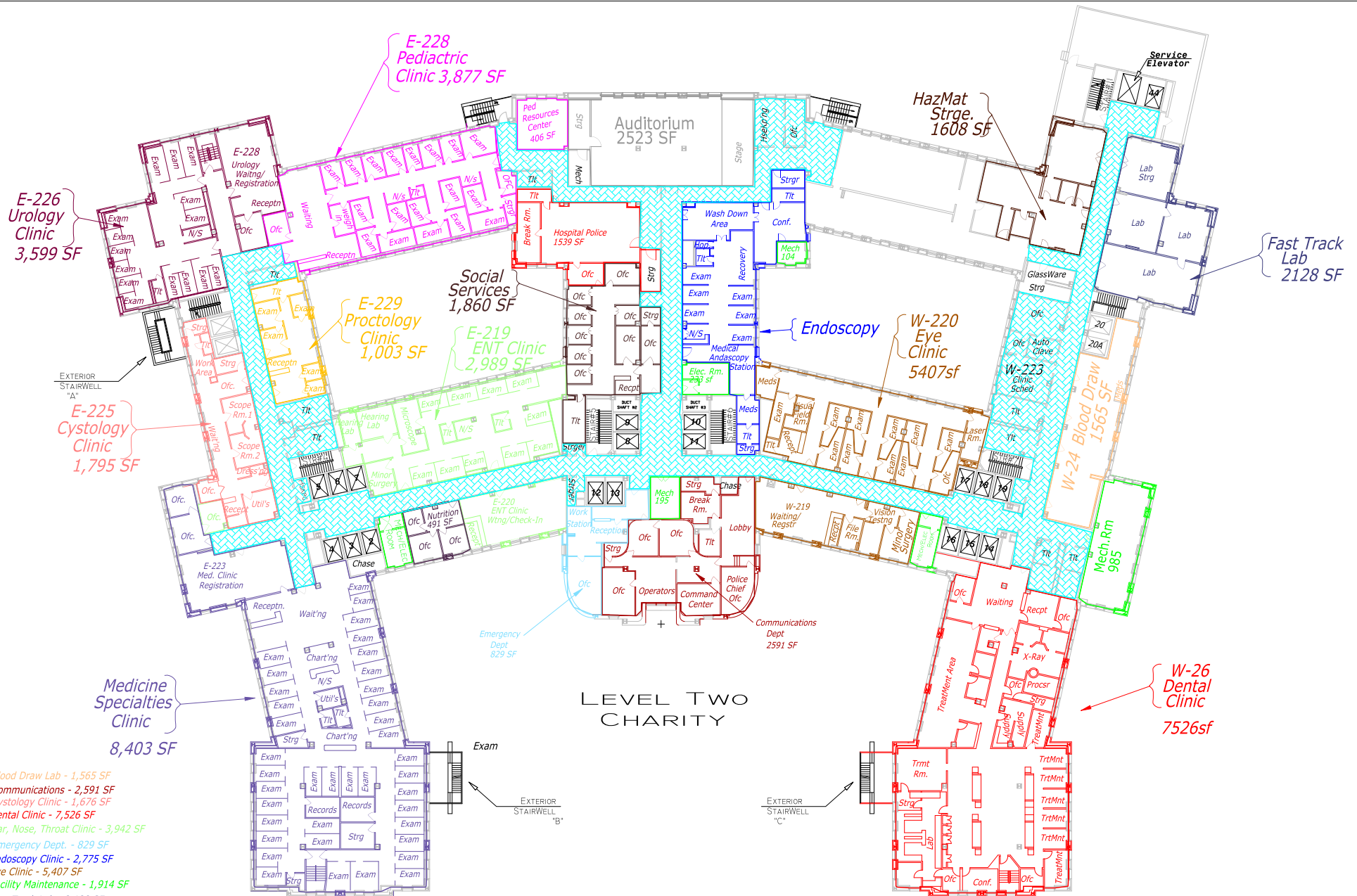
Administration - 7,430 SF





LEVEL NINETEEN  
CHARITY  
UNASSIGNED

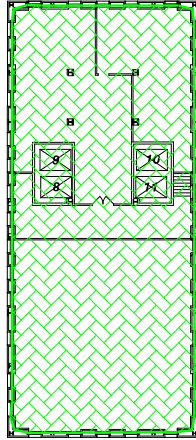




### LEVEL TWO CHARITY

- Blood Draw Lab - 1,565 SF
- Communications - 2,591 SF
- Cystology Clinic - 1,676 SF
- Dental Clinic - 7,526 SF
- Ear, Nose, Throat Clinic - 3,942 SF
- Emergency Dept. - 829 SF
- Endoscopy Clinic - 2,775 SF
- Eye Clinic - 5,407 SF
- Facility Maintenance - 1,914 SF
- Fast Track Lab - 2,128 SF
- General Administration - 11,620 SF
- Haz Mat Storage - 1,608 SF SF
- Hospital Police - 1,539 SF
- Medicine Specialty Clinic - 8,752 SF
- Meeting Space - 2,523 SF
- Nutrition Clinic - 491 SF
- Oncology Clinic - 3,599 SF
- Pediatric Clinic - 4,283 SF
- Proctology Clinic - 1,003 SF
- Social Workers - 1,860 SF





LEVEL TWENTY  
CHARITY

Facility Maintenance - 6,214 SF



Mental Health InPatient

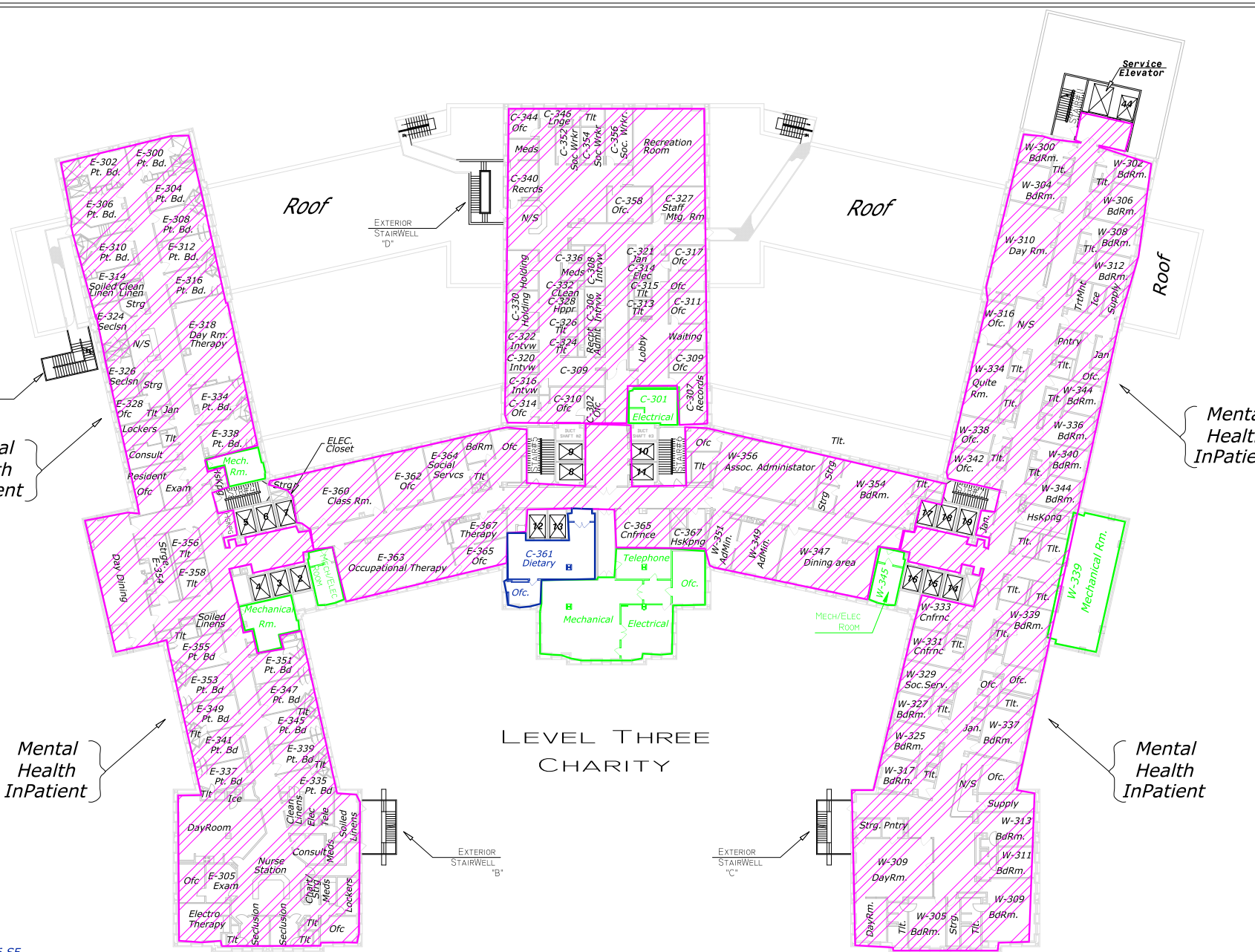
Mental Health InPatient

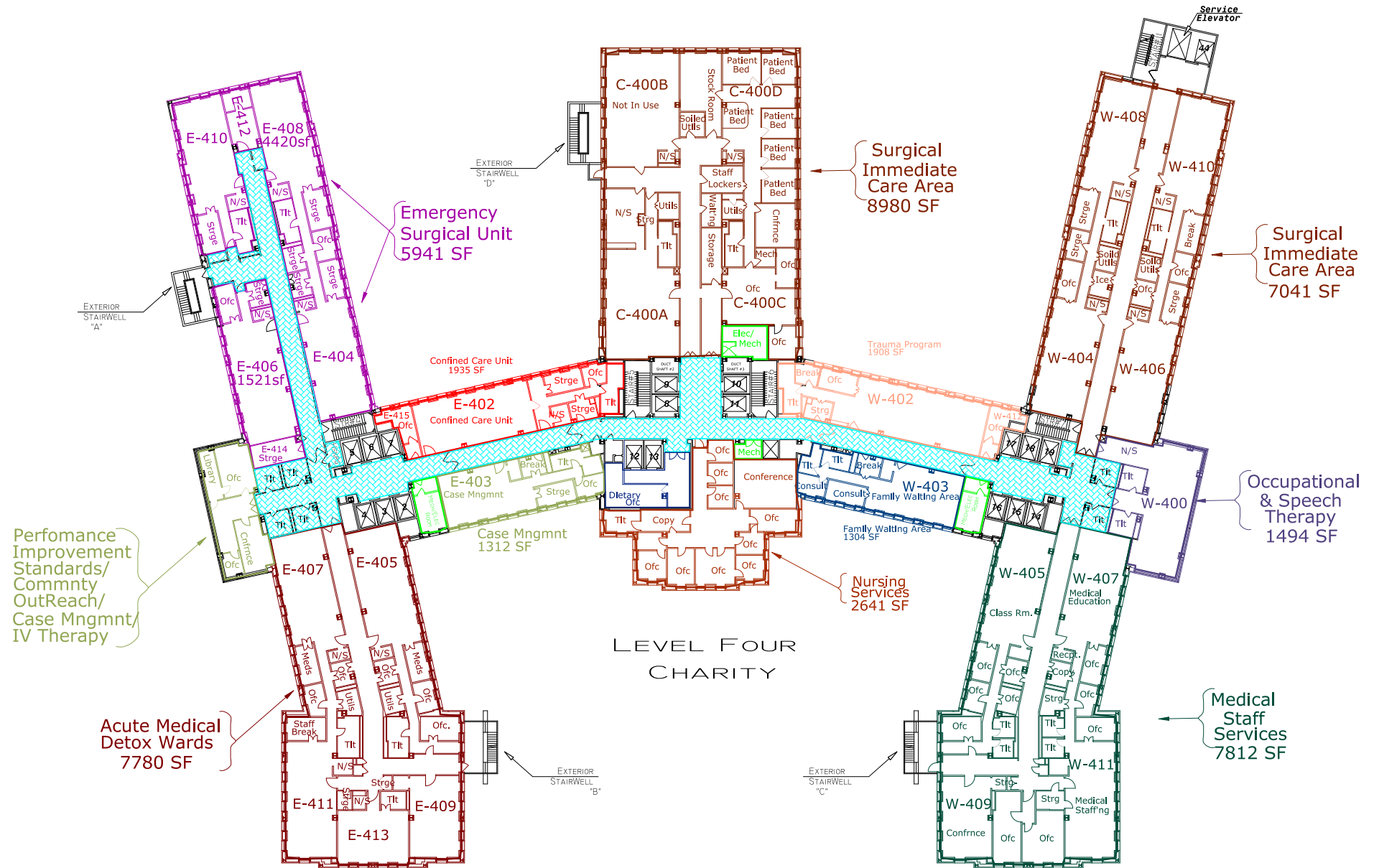
Mental Health InPatient

Mental Health InPatient

### LEVEL THREE CHARITY

Dietary - 766 SF  
Facility Maintenance - 4,171 SF  
Mental Health - 52,960 SF

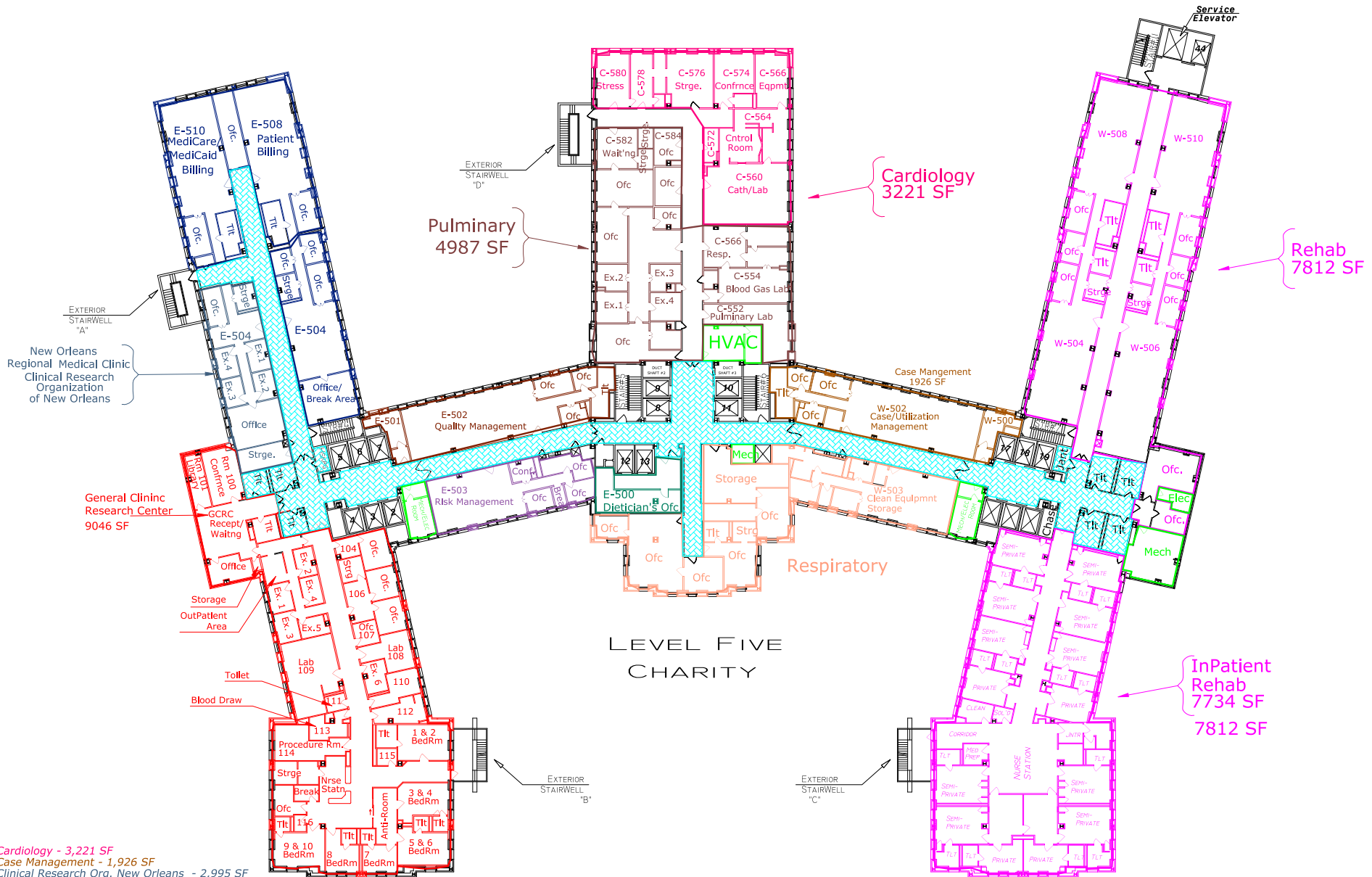




### LEVEL FOUR CHARITY

- Acute Detox - 7,780 SF
- Case Management - 2,305 SF
- Confined Care Unit - 1,935 SF
- Dietary - 574 SF
- Emergency Surgical Unit - 5,941 SF
- Facility Maintenance - 2,641 SF
- Family Waiting - 1,304 SF
- General Admin. - 3,979 SF
- Medical Staff Services - 7,812 SF
- Nursing Services - 2,641 SF
- Occupational/Speech Therapy - 1,494 SF
- Surgical Immediate Care Area - 16,021 SF
- Trauma Programs - 1,908 SF

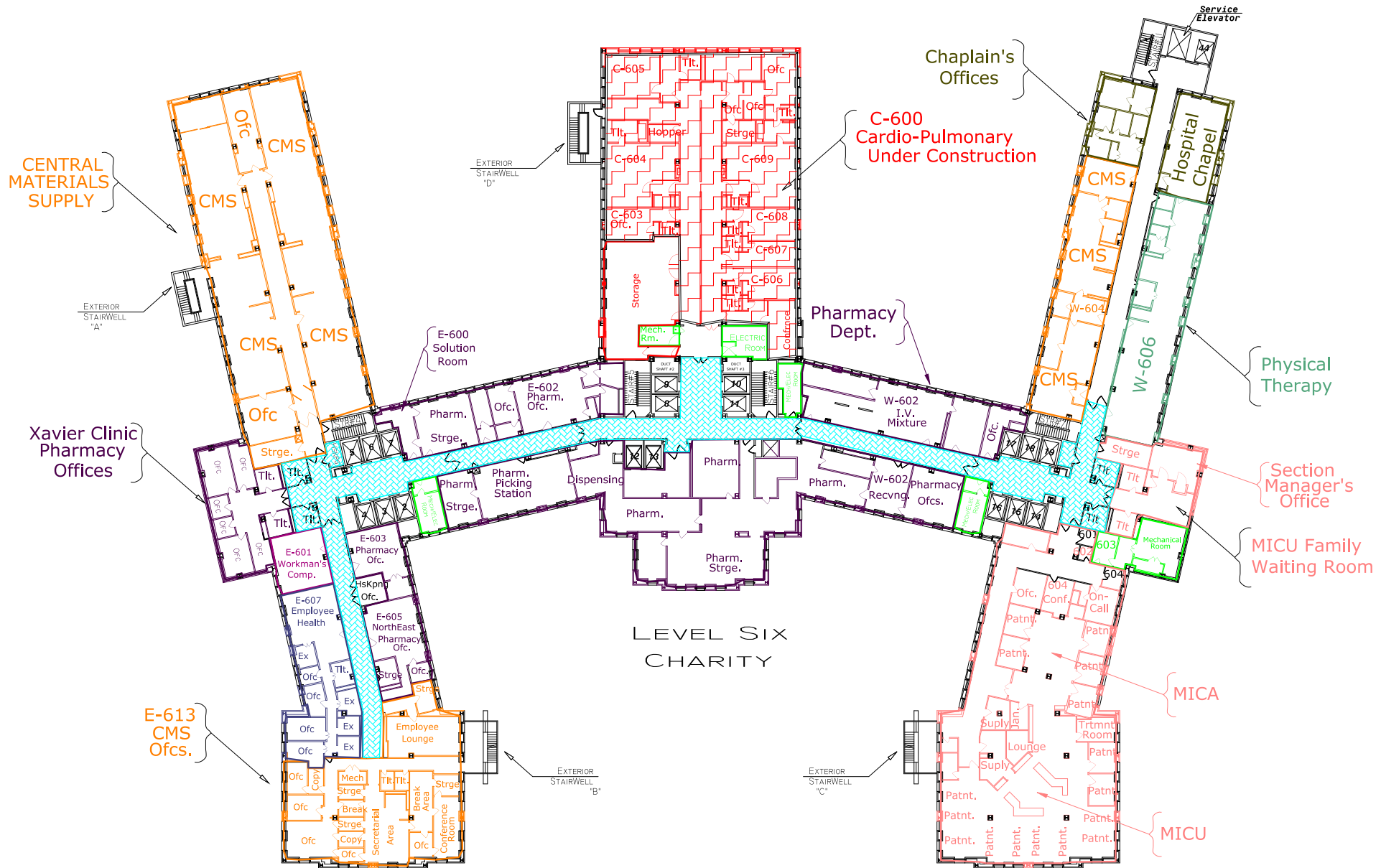




Cardiology - 3,221 SF  
 Case Management - 1,926 SF  
 Clinical Research Org. New Orleans - 2,995 SF  
 Dietary - 571 SF  
 Facility Maintenance - 1,276 SF  
 General Admin. - 6,041 SF  
 General Clinic Research Center - 9,46 SF  
 Medicaid/Medicare Billing - 3,007 SF  
 Quality Management - 1,831 SF  
 Pulmonary - 4,987 SF  
 Rehabilitation - 15,546 SF  
 Respiratory - 3,758 SF  
 Risk Management - 1,304 SF

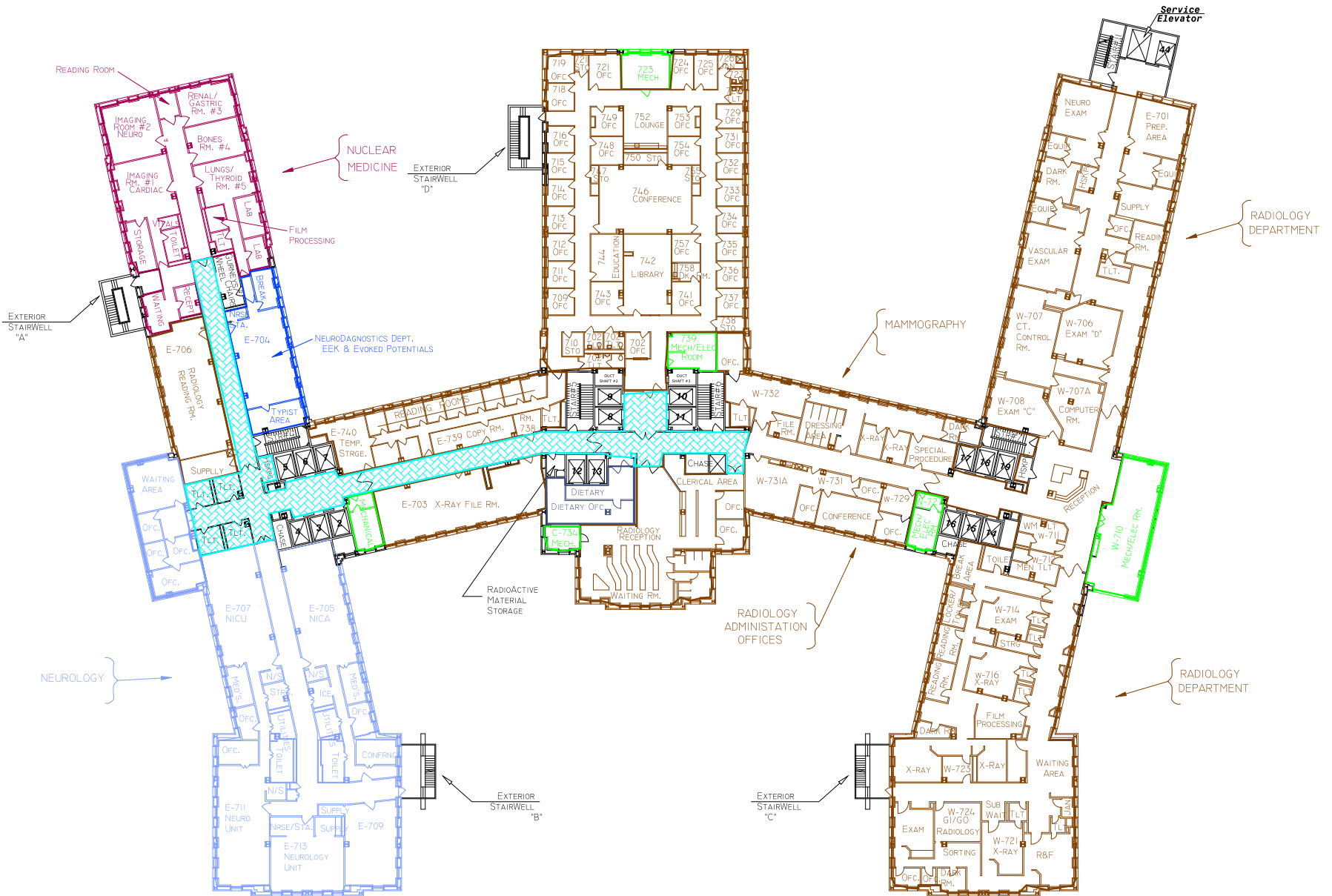






- Central Material Supply - 13,957 SF
- Chaplin Services - 1,496 SF
- Employee Health - 1,596 SF
- Facility Maintenance - 1,496 SF
- General Admin. - 4,945 SF
- Human Resources - 457 SF
- Medical Intensive Care Unit - 9,703 SF
- Pharmacy - 12,755 SF
- Physical Therapy - 2,157 SF
- Pulmonary - 1,238 SF

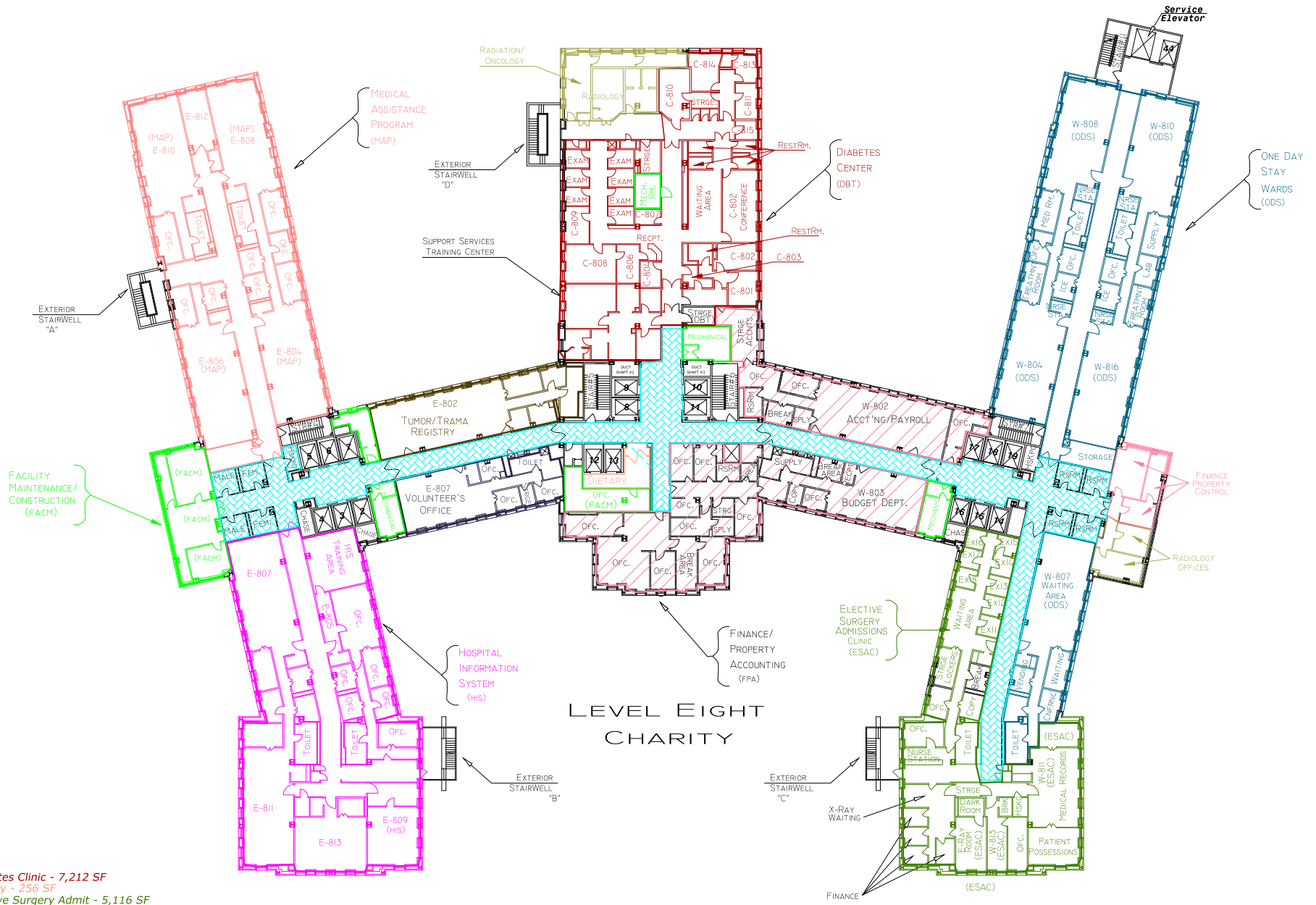




- Dietary - 578 SF
- Facility Maintenance - 2,038 SF
- General Admin. - 3,414 SF
- Nuclear Medicine - 3,870 SF
- Neurology - 8,827 SF
- NeuroDiagnostics - 1,178 SF
- Radiology - 31,815 SF

**LEVEL SEVEN  
CHARITY**

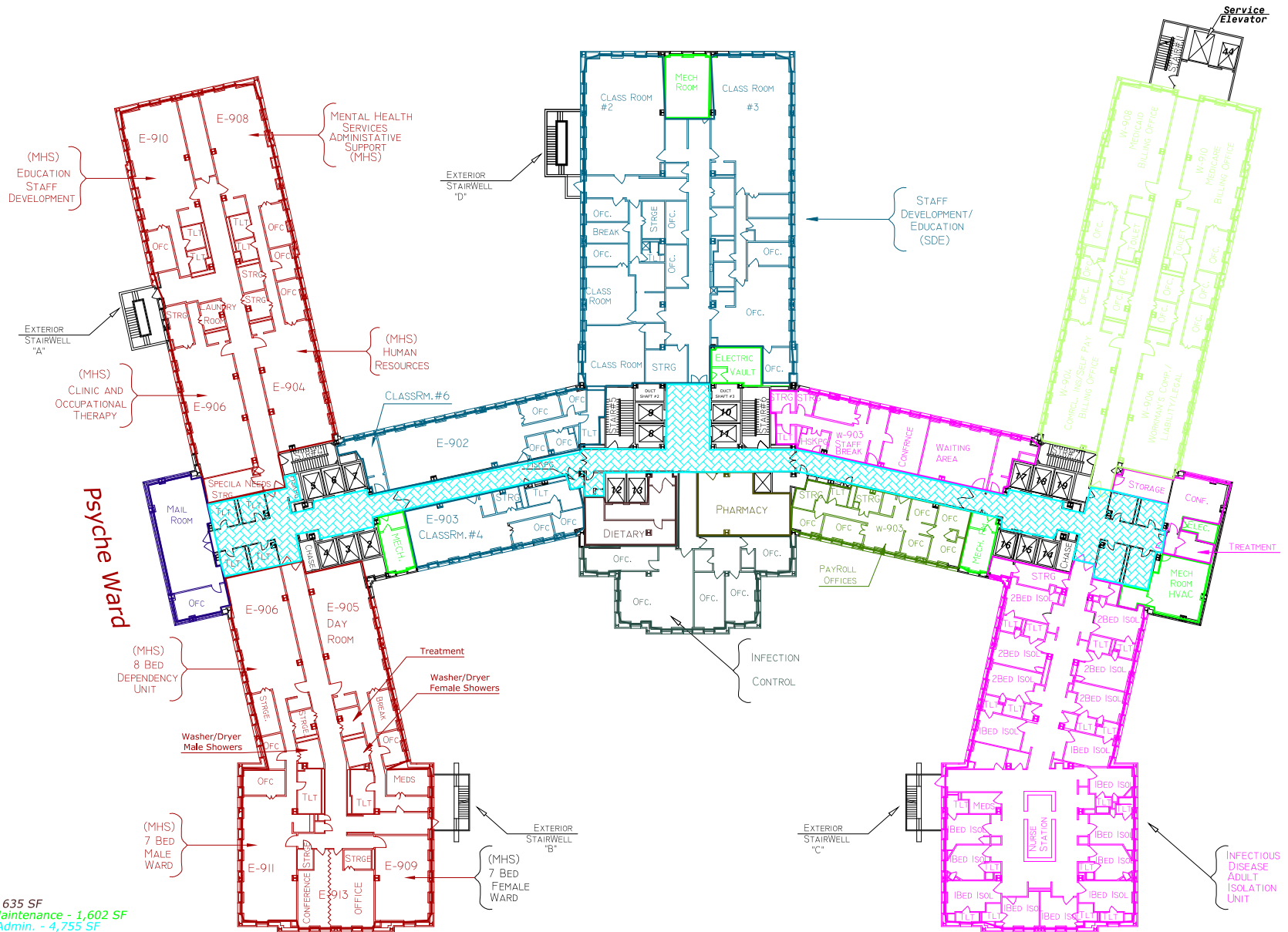




LEVEL EIGHT  
CHARITY

- Diabetes Clinic - 7,212 SF
- Dietary - 256 SF
- Elective Surgery Admit - 5,116 SF
- Facility Maintenance - 2,352 SF
- Finance - 6,804 SF
- General Admin - 5,707 SF
- Hospital Information Systems - 7,776 SF
- Medical Assistance Program - 7,342 SF
- One Day Stay - 9,041 SF
- Radiology - 1,439 SF
- Trauma/Tumor Registry - 1,740 SF
- Volunteer - 1,302 SF

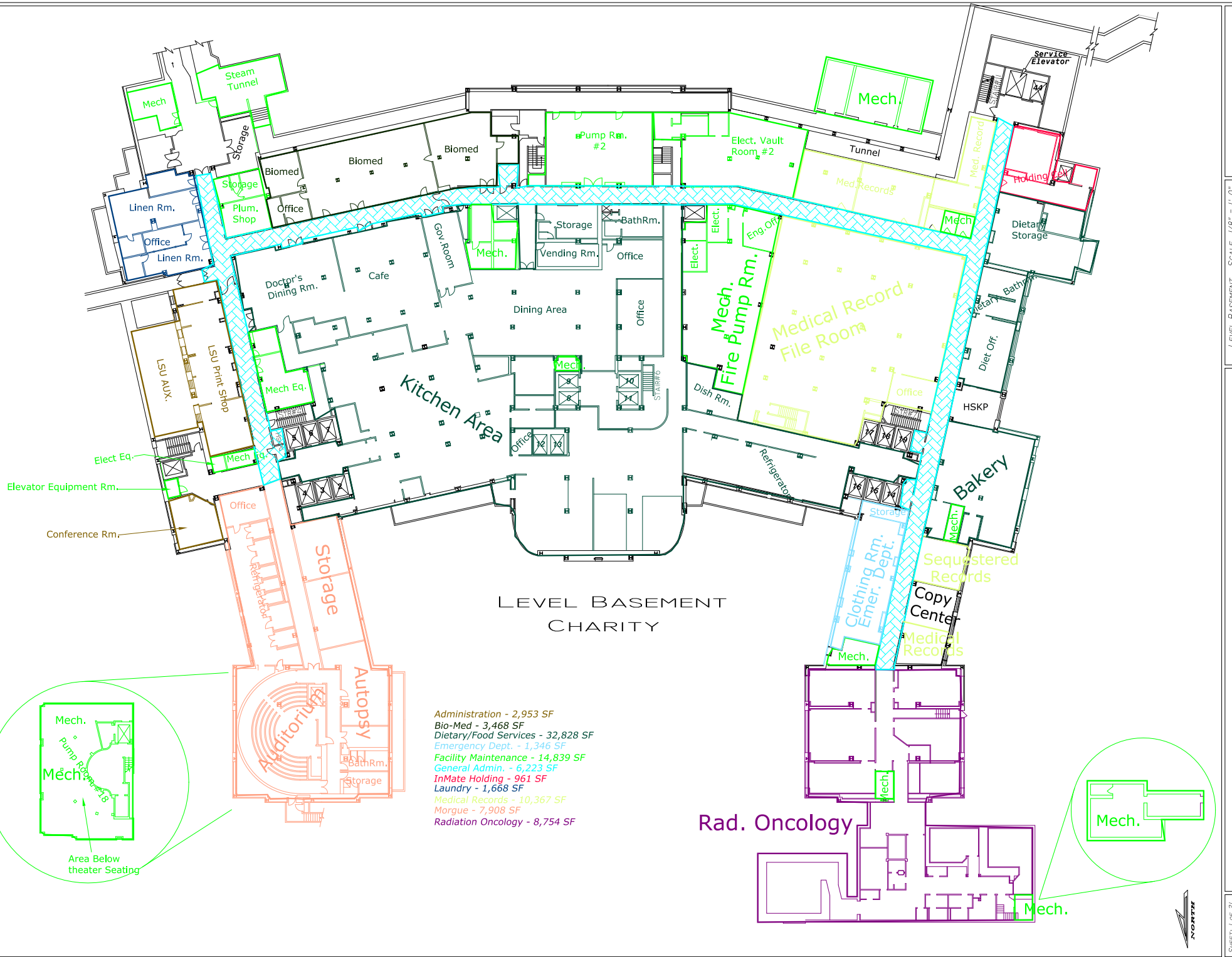




- Dietary - 635 SF
- Facility Maintenance - 1,602 SF
- General Admin. - 4,755 SF
- Hospital Billing - 7,151 SF
- Infection Control - 2,049 SF
- Infectious Disease Adult Isolation - 10,393 SF
- Mail Room - 992 SF
- Payroll - 1,336 SF
- Pharmacy - 676 SF
- Psyche Ward - 15,120 SF
- Staff Development/Education - 11,814 SF

**LEVEL NINE  
CHARITY**





LEVEL BASEMENT  
CHARITY

- Administration - 2,953 SF
- Bio-Med - 3,468 SF
- Dietary/Food Services - 32,828 SF
- Emergency Dept. - 1,346 SF
- Facility Maintenance - 14,839 SF
- General Admin. - 6,223 SF
- InMate Holding - 961 SF
- Laundry - 1,668 SF
- Medical Records - 10,367 SF
- Morgue - 7,908 SF
- Radiation Oncology - 8,754 SF

